

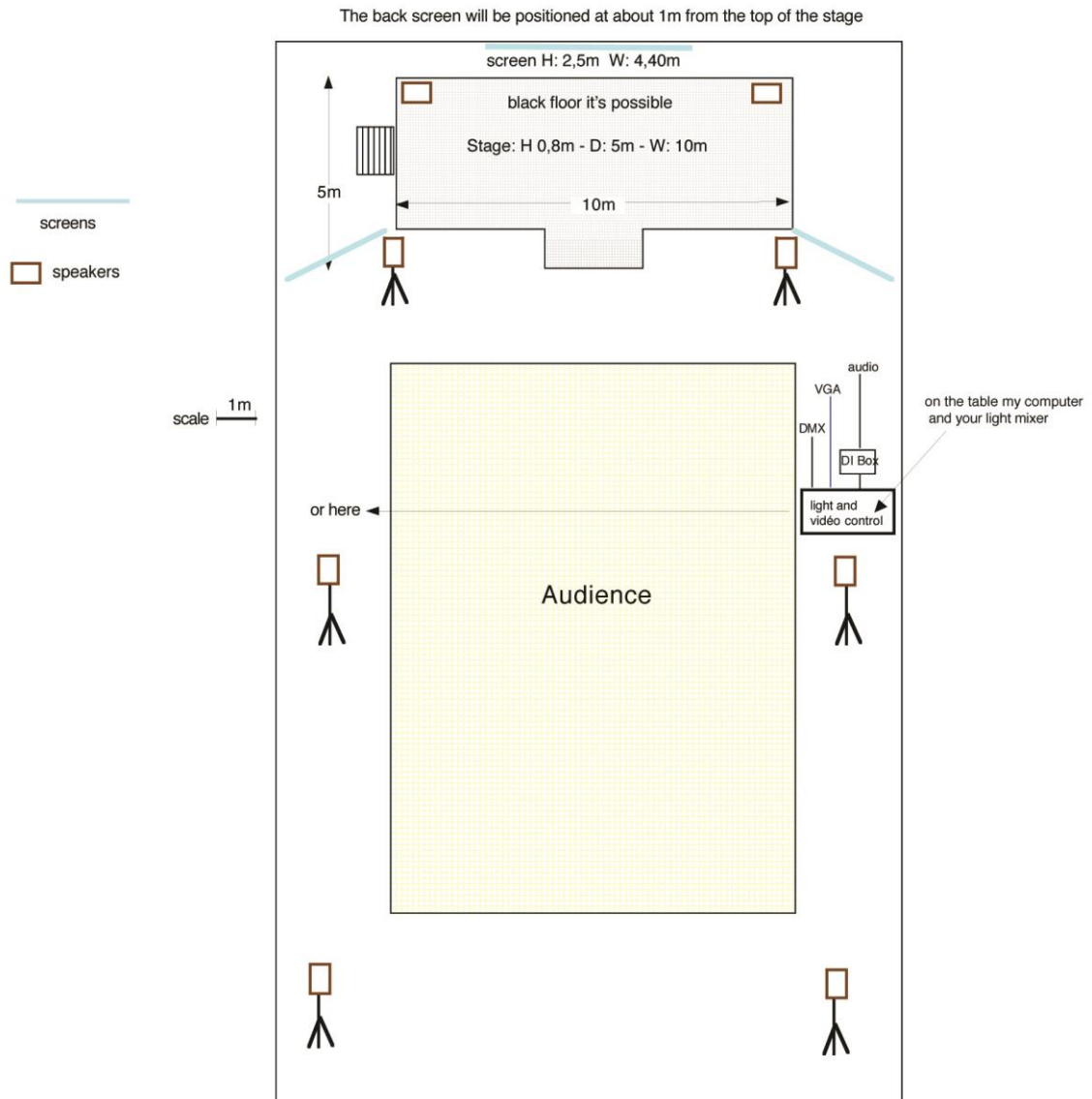
SUEÑO EN LA FABRICA

Technical rider Sueño en la Fabrica / ELOGIO AL ARBOL DUO V 8 /06/2013

The duo consists of singer and guitarist on stage.
A video and light technician is provided by the company.

The mix of the show is provided by musicians from the stage.

View N°1 installation and sizes



2-SOUND :

- A professional quality sound system, sub bass, power adapted at the audience

-2 monitors mixed on 2 independent mixes

- A professional analog mixer on stage, type Midas Venice with 48V power supply located on stage - (Music is premixed from the stage.)

with minimum 16 inputs, 8 direct outs (jacks 6.35mm), 6 sub groups 2, auxiliary mixes .

The routing of our sound mix is :

Mic 1 to 7 and line inputs 8-9-10 are plugged on mics/line 1 to 10. They are sent by direct outputs, individually to the inputs of our sound card, for sounds effets, sourround pan etc....These inputs 1 to 9 MUST NOT be routed to the mix outputs or sub groups.

The 6 outputs of our sound card are plugged on inputs 11-12-13-14-15-16.

These inputs are routed to 6 outputs of the mixing desk. For exemple 4 subgroups and 2 masters.

We are not working with usual monitor system. As the mix is provide by the musician, to keep the control of the multi diffusion the monitors 1 and 2 are only a copy of the mix of speakers 1 and 2

We provide the following mics :

1 micro Shure Beta86

2 micros Neuman KM184

1 Shure beta 91

BACKLINE :

1 small table for the computer and computers of video technician, in the room.

5 simple keys stands

1 bar seat or high chair

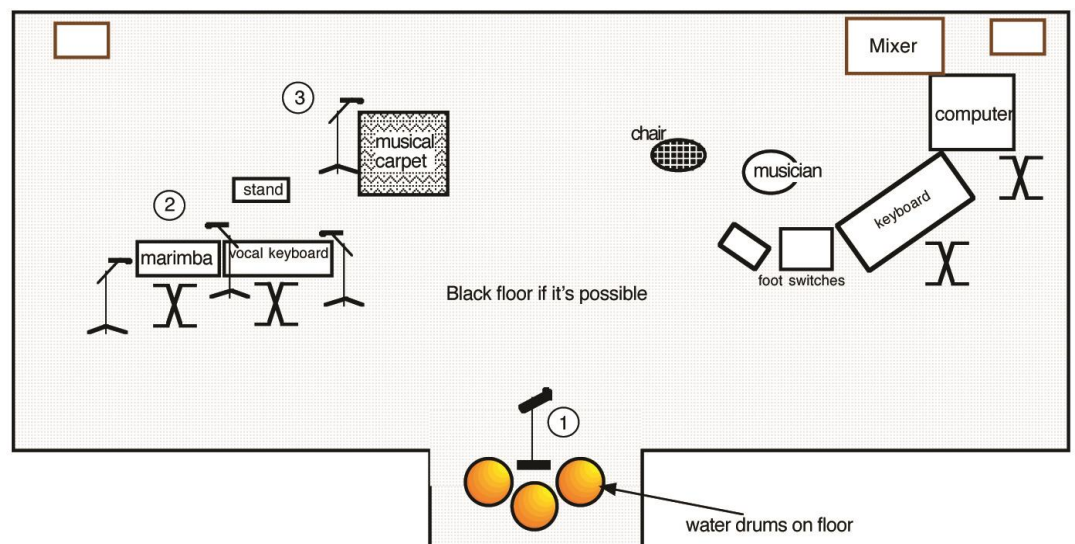
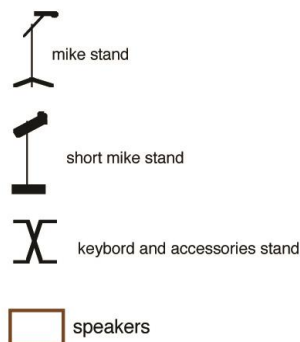
1 music stand

You must provide all other mics, cables and mics stands.

See the patch and plan :

STAGE PLAN : MUSICIAN SETS

the singer places ①



SOUNDPATCH AND MIXER ROUTING

Sound	VOICE RC50	VOICE Marimba	VOICE CARPET	VOICE DRUM	WATERD RUM	WATERD RUM	Marimba	Spare	guitar-L	Guitar -R	Sound card 1-	Sound card 2-	Sound card 3	Sound card 4	Sound card 5-	Sound card 6	
Mic	Shure SM86	Shure SM58	Shure SM58	Shure SM58	Shure BETA91	Shure BETA91	Neuman km184	Shure SM58									
Stand	Standard	Standard	Standard	Short			Standard	Standard									
Input	1	2	3	4	5	6	7	8	9	10	11	12	13	14	15	16	
direct out	X	X	X	X	X	X	X	X	X	X							to sound card
Aux 1											X						to monitor 1
Aux 2												X					to monitor 2
sub group 1											X						To speaker 1
sub group 2												X					To speaker 2
sub group 3													X				To speaker 3
sub group 4														X			To speaker 4
sub group 5															X		To speaker 5
sub group 6																X	To speaker 6

LIGHTING :

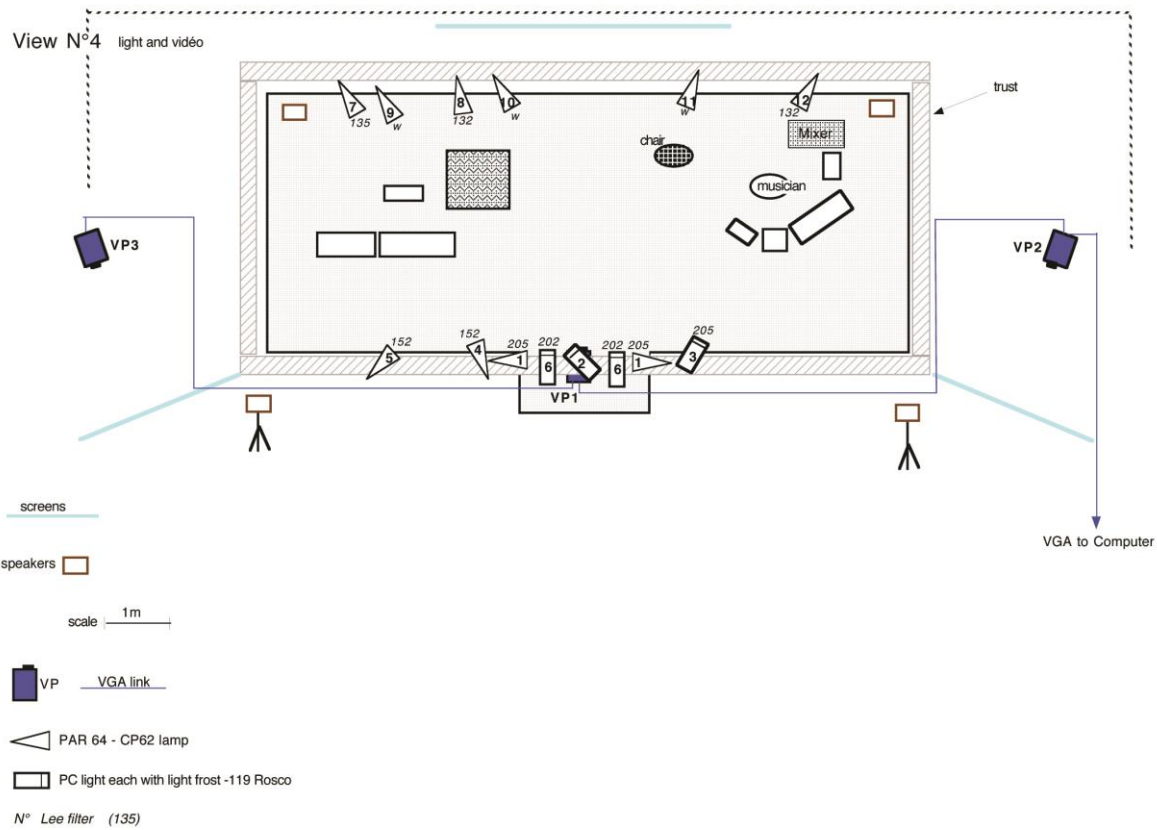
10 PARs 64 projectors with CP 62 lamps (médium)

4 PC light

for the gel N° see the light plot

If possible I'd like to have the light amplifier under the stage linked to the lighting board with a DMX cable.

1 Lighting board 12 channels (with submasters to record scenes)



Vidéo

3 vidéo projectors 4500 lumens with VGA cable (see the plot)

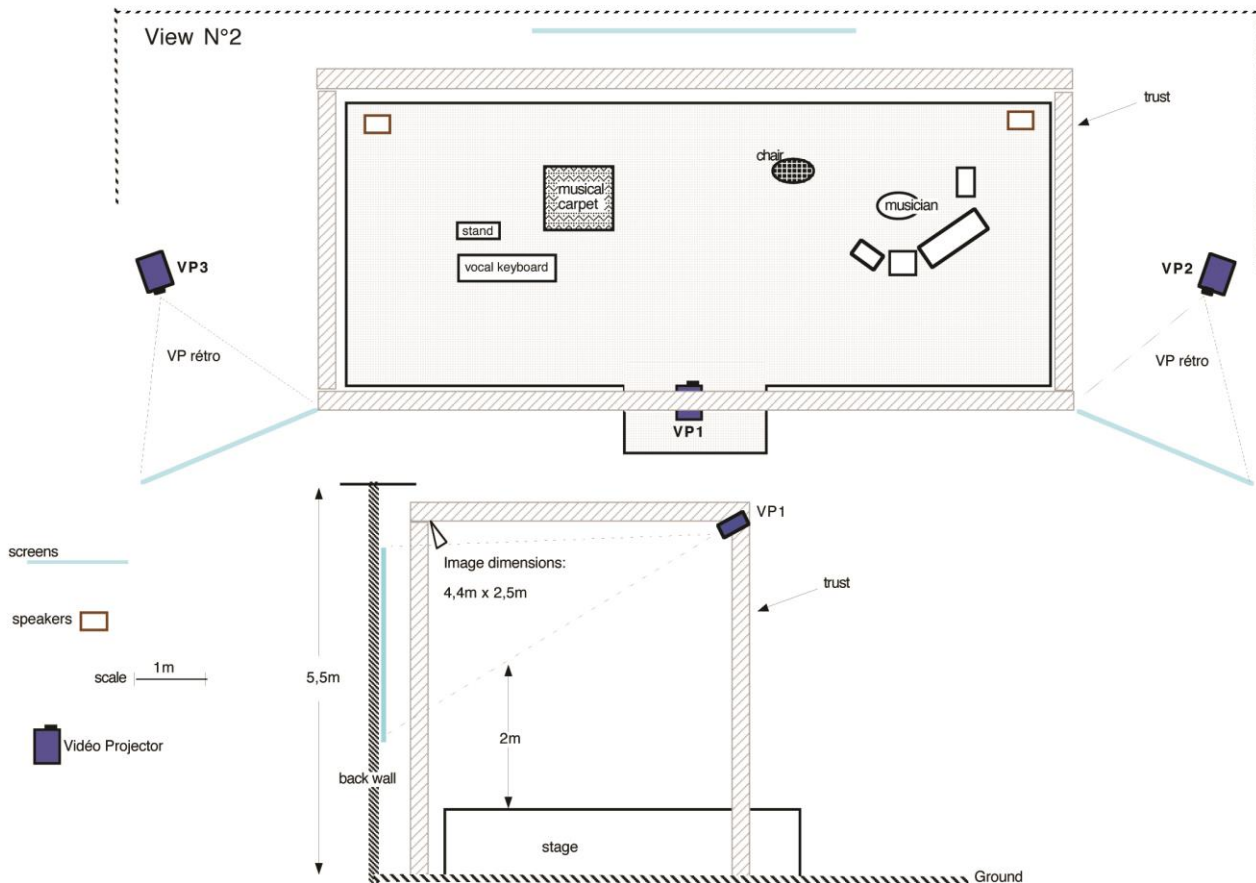
If the secondary screen allow retro projection with a few lost of light, the 2 secondary video projectors can be 3000 lumens.

1 screen (the main) 2,5m X 4,5m

2 screens (secondary) smaller for the right and left side of the stage.

A table for the lighting board and the my computer (vidéo)

Our power source (computers for example)are at european standart plug.



OTHERS :

1 dressing room for 2 persons with mirrors and toilet

1 flat iron.

1 sound technician to assist us during the install and the sound check.

Everything must be ready and cabled, before our arrival

We need 2 X 4 hours of installation and settings.

Please contact us and give us the plans and equipment location.

We can study many adaptations with anticipation.

Contact :

Didier Boyat

contact@suenoenlafabrica.com

tel : +(33) 4 74 25 07 99

mobile tel : +33 6 11 96 82 06