

THE GARDENER AND THE CATERPILLAR

Technical sheet V 20 aout 2012

-Set up time : 5 hours

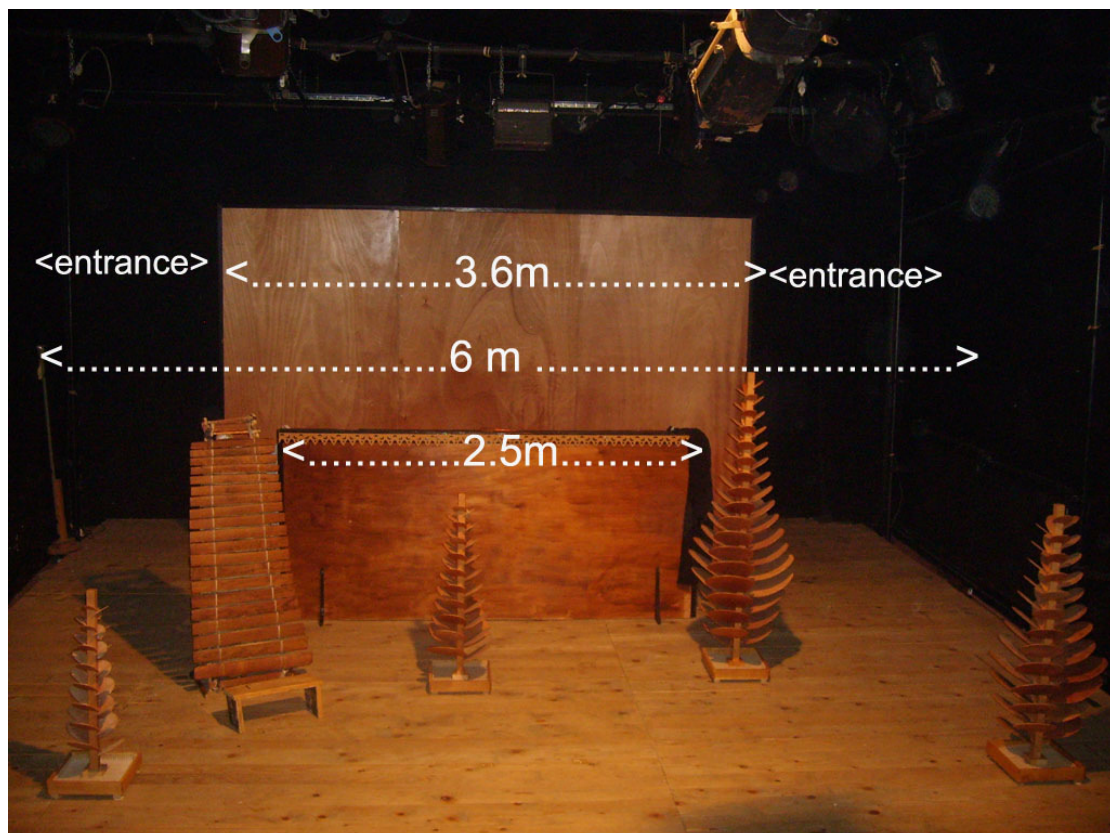
-Stage: 7m wideX 6m deep. The higher of the stage has to be adapted for children vision.
50cm High with step is a good idea. Possible too, a stage at the level of the floor and first row of children seat down on carpets.

-scenery: 3 wooden panels (high, at the back)
1 balafon
5 musical trees
Accessories stocked et behind the “Castellet” (front horizontal wooden panel)

NB : The 3 wooden panels must be made by the organiser in case of international travel, to allow us to travel only with accompanied baggage.
In this case, see the construction plan at the end .

We need 6 iron weights of 10kg each, 15cm*20cm) to fix the “castellet” and the wooden panels on the floor (see photo 2)

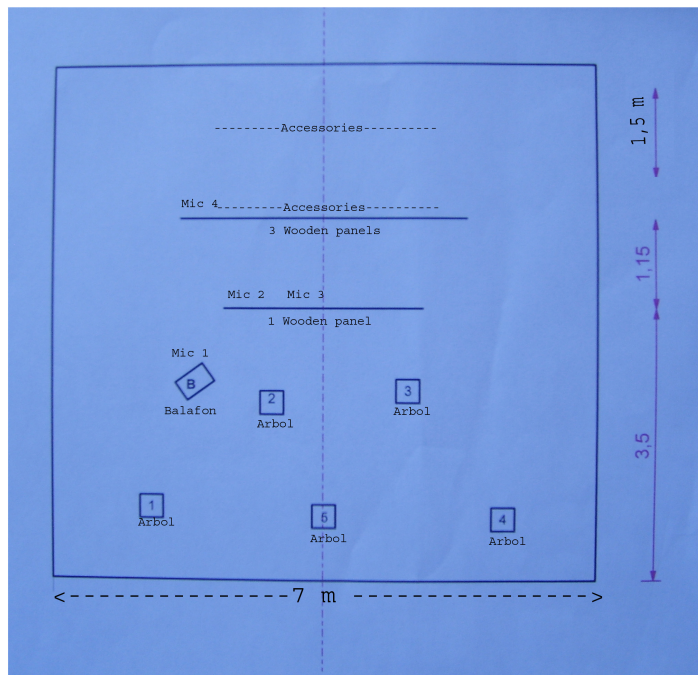
For better understanding, here are some photos:





Back stage

Stage plot:



-Sound

Stéréo sound system adapted to the room (NEXO PS 15 + Sub Bass for example)

An analog mixing console with 8 inputs and direct outputs, 48V or 5 auxiliary circuits (type midas Venice)

1 CD players

Unless by prior arrangement, we provide microphones.

1 monitor at the back of the stage.

The soundcheck is made by ourselves and we manage the sound during the show from this backstage console, but :

The console, and the CD player must be installed backstage at the middle, behind the scenes and accessible by the actors. We do not need sound technician during the show. If the main console is located anywhere else, you must provide another standalone console on the stage, which can be rewired on the main console.

Mics Patch :

N°	Instrument	Micro Type	Routing	To Aux post
1	Balafon	Shure SM/57	Di out to motu+Master	
2	Castellet ext	Shure SM58	Di out to motu+Master	
3	Castellet center	Shure Beta 91	Di out to motu+Master	
4	Background	Shure SM58	Di out to motu+Master	
5	CD-L 1		Master	To Monitor post fader
6	CD-R 1		Master	To Monitor post fader
7	MOTU-L		Master	To Monitor post fader
8	MOTU-R		Master	To Monitor post fader

Details:

We use a computer and a sound card (we provide) to manage a soundtrack and effects. The mics are set by the computer using the direct outputs of the console.

The CD serves as security.

For the installation of microphones, all cables must pass to the backstage.

Mics 2-3 are fixed on the Castellet.

Mic 1 is fixed on the balafon.

The microphones do not change their place during the show.

-LIGHTS :

1- 24 circuits 2kW console

3 PC 1KW

3 PAR64 CP61

10 PAR64 CP62

4 zoom profile 614 sx with 2 gobos holders, and 1 iris)

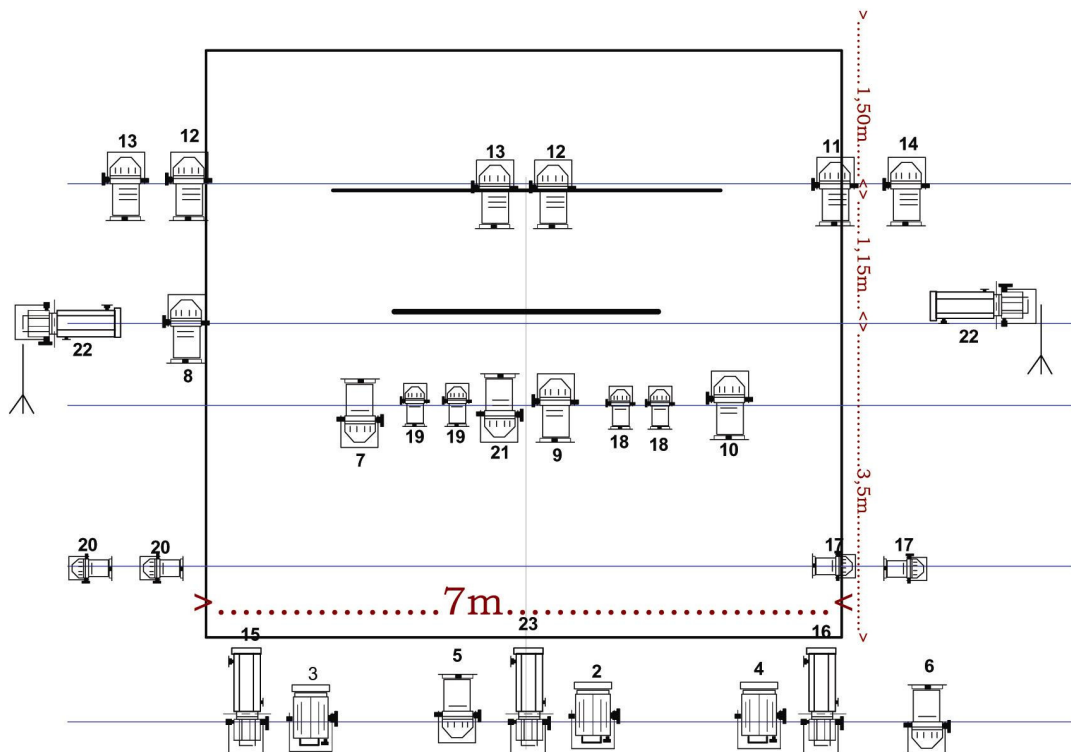
8 par 36 ou F1

1 smoke machine

GELS : LEE FILTER 106, 126, 132, 205.

Installation and set up : 5 hours

LIGHTS PLOT :



SPOTLIGHT V 23 sept 2007

channel	spotlight		Gel (LEE)
1	House lights		
2	PC 1 KW light or Frenel	2	205
3	PC 1 KW light or Frenel	2	205
4	PC 1 KW light or Frenel	2	205
5	PAR cam 64 cp61	1	W
6	PAR cam 64 cp61	1	W
7	PAR cam 64 cp61	1	W
8	PAR cam 64 cp62	1	W
9	PAR cam 64 cp62	1	W
10	PAR cam 64 cp62	1	W
11	PAR cam 64 cp62	1	126
12	PAR cam 64 cp62	2	126
13	PAR cam 64 cp62	2	132
14	PAR cam 64 cp62	1	132
15	Zoom profile for gobo (30°/53°)	1	115
16	Zoom profile for gobo (30°/53°)	1	W
17	PAR cam 64	2	W
18	PAR cam 64	2	W
19	PAR cam 64	2	W
20	PAR cam 64	2	W
21	PAR cam 64 cp62	1	W
22	Zoom profile (30°/53°)	2	W
23	Zoom profile (30°/53°)	1	106
24	fog machine	1	

Contacts :

Sound and other :

Didier BOYAT 04 74 25 07 99 + (33) 474 25 07 99

06 11 96 82 06 + (33) 611 96 82 06

mail : didalelusil@gmail.com

Lights : **Claude Husson** : claudehusson@wanadoo.fr

(tel : 06 83 07 39 90 / +33 683 07 39 90)

Traveling infos :

LISTA DE MALETAS						
		3 personas viajan				
"EL JARDINERO Y LA ORUGA"V.20 agosto 2012						
NB : esta lista es valida en caso que fongione el hecho de poder fabricar los elementos de escenografia que se han pedido. (3 paneles de madera)						
	ELEMENTO	L /cm	l /cm	H/ cm		Peso/kg
Maleta 45kg (oversize)	Accesorios :Grand + petit jardin	91	48	68		45
Maleta 45 kg (oversize)	Instrumento : Balafon + accesorios	116	66	20		45
Maletta 23	Structure decor	90	30	30		23
Maletta 23	Accesorios	90	30	30		23
Maletta 23	Accesorios	80	40	30		23
maleta personal						23
maleta personal						23
maleta personal						23
Maleta de mano (con computador)						10
guitarra de mano						10
guitarra de mano						10
	200					
3 personas viajan						
Normas de la compania IBERIA	IBERIA					
	Instrumentos autorizados /cabina					
	30x120x38	guitarra				
	Bagages oversize autorizados					
	190*75*65	45kg				
	Maletas					
	L+I+H = 156cm	23kg				